



VIVEK TUTORIALS

Biology
Weekly Test
Max Marks: 42

Date : 20/Jan/2020

Grade: 8th (ICSE)
Enodo & Circulatory

Time: 1Hrs

Question 1

(a) Choose the odd one in each of the following questions:

- (1) RBC, platelets, anti-A, WBC
- (2) Arteries, capillaries, blood, veins
- (3) Pituitary, adrenal, thyroid, salivary gland

1
1
1

(c) Mention whether the following statements are TRUE or FALSE. If false , rewrite the correct one:

- (1) For hormones to be effective in their actions, they are required in sufficiently large quantities.
- (2) Platelets help in clotting of blood.
- (3) Blood group A has antigen A.
- (4) People with blood group 'O' are called universal recipients.

1
1
1
1

Question 2

Attempt the following:

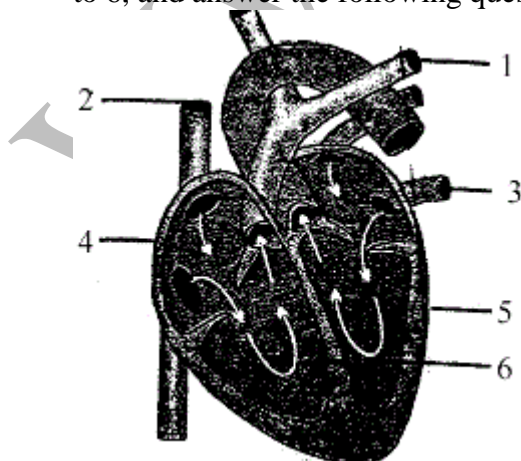
- (a) Observe the following figure and answer the questions which follow.

5



- (a) Which organ is shown in this figure?
- (b) Deoxygenated blood enters in which side of this organ?
- (c) Which artery carries deoxygenated blood?
- (b) Following diagram indicates a human heart showing its internal structures. Label the parts marked 1 to 6, and answer the following questions.

5



- (a) Which types of blood is carried by the blood vessel marked 2?

- (b) Name the main artery which takes the blood from heart to different parts of the body?
 (c) Which chamber of the heart receives deoxygenated blood from the body?

Question 3

(a) Match the following:

Column A	Column B
1. Heart	(a) Movement of materials
2. Food and oxygen	(b) Channels for transport in man
3. Carrier of oxygen	(c) A living pump
4. Circulation	(d) Materials needed by every living being
5. Arteries and veins	(e) Red blood cells

5

(b) Answer the following:

Why should the blood going away from the stomach and intestines pass through the liver and not directly to heart?

5

Question 4

(a) Define the following:

- | | |
|------------------------|---|
| (1) Deoxygenated blood | 1 |
| (2) Pulse | 1 |
| (3) Arteries | 1 |
| (4) Passive transport | 1 |
| (5) Systole | 1 |

(b) Answer the following in one or two sentence:

- | | |
|--|---|
| (1) Which one of the following endocrine glands produces its hormone in large quantities as a result of emotional stimulation? | 1 |
| (a) Thyroid | |
| (b) Islets of Langerhans | |
| (c) Adrenal medulla | |
| (d) Adrenal cortex | |
| (2) In humans, increased thyroxine production results in (tick the correct answer) : | 1 |
| (a) Increased metabolism | |
| (b) Decreased metabolism | |
| (c) Dwarfism | |
| (d) Cretinism | |
| (3) What are seen as greenish blue lines in our hands and legs? | 1 |
| (4) Which gland secretes insulin? | 1 |
| (5) In which organ of our body does blood become oxygenated? | 1 |

Question 5

(a) Attempt the following:

(b) Answer the following:

Red Blood cells have no nucleus, then why do we call them cells?

5

----- All the Best -----